



# Parks Road Intersection and Frontage Roads

## PROJECT PURPOSE

The Idaho Transportation Department is proposing to improve safety and increase mobility on US-95 in Kootenai County between Athol and Bunco Roads where Parks Road intersects with the highway.

The US-95, Parks Road Intersection and Frontage Roads project will enhance safety for the intersection by restricting left turns within the intersection and constructing frontage roads to connect existing roadways.

The project will also make improvements to the Pope/Bunco Road area, which serves Silverwood Theme Park. The project includes plans to decrease congestion and give alternative routes for theme park access.

## PROJECT LOCATION

This project is located at the US-95 and Parks Road intersection south of Athol. The upper section of the project includes intersection improvements and new frontage roads on either side of US-95 between Athol and E. Son Shine Way. The lower section of the project includes the Pope/Bunco Road area.

## HOW WE GOT HERE

Before developing the design improvements at the US-95 and Parks Road intersection, ITD conducted a thorough evaluation of the area. A detailed and data-driven process was utilized to balance the needs of the traveling public with the impacts to nearby properties and the surrounding environment.

The following categories were included in the analysis:



**Safety ■ Flow  
Traffic Operation**



**Access**



**Environmental  
Considerations**



**Stakeholder Input**



**Connectivity  
Constructability**

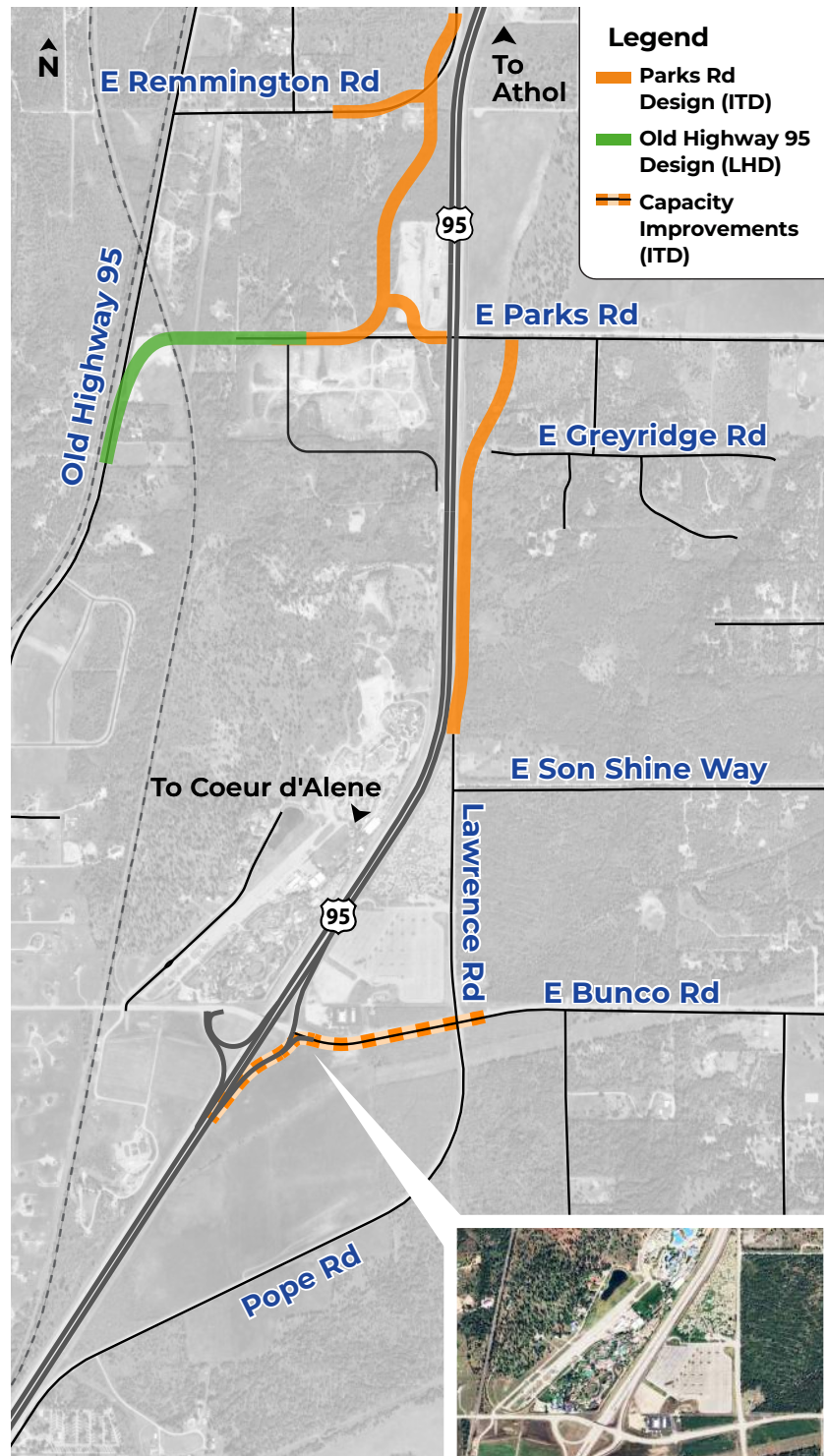


**Cost**



**Right-of-Way  
Impacts**

**Here's where you come in!**



## ■ PROPOSED DESCRIPTION

ITD is proposing improvements to the intersection of US-95 and Parks Road and the Pope/Bunco Road area to enhance safety, increase mobility, and reduce congestion. The project is currently in the design phase and proposed improvements include:

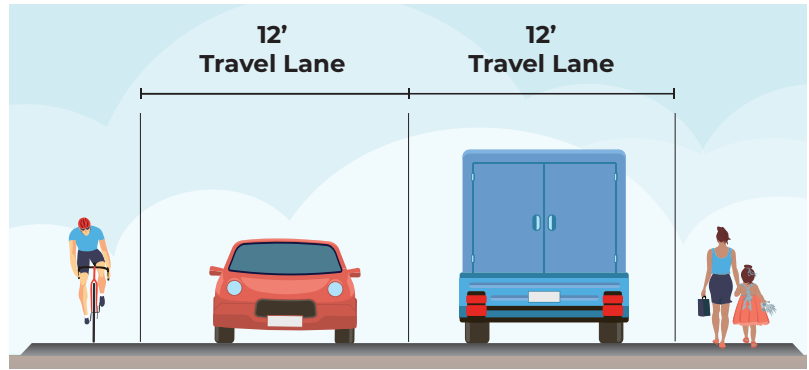
- Eliminating left turns and median crossing to allow right-in/right-out only access at Parks Road and US-95.
- Constructing a frontage road from Parks Road to where Lawrence Road currently dead-ends, which will complete the frontage road network on the east side of US-95 all the way to SH-53.
- Coordinating with the Lakes Highway District as they complete a separate project to realign Old Highway 95 to Parks Road. Together, the projects will improve connectivity and provide users with more roadway options.
- Improving the US-95 and Parks Road intersection to handle increased traffic volumes due to the realignment of Old Highway 95.
- Maintaining connectivity and access to Old Highway 95 through Athol.
- Building compatibility with future corridor needs, including a possible future interchange.
- Providing alternate connections via frontage roads to help alleviate congestion on US-95 that stems from Silverwood Theme Park traffic.

## ■ ADJACENT PROJECT

ITD is coordinating with the Lakes Highway District as they complete a separate project to realign Old Highway 95 to Parks Road. While the projects are independent, together they will improve connectivity and provide users with more roadway options.

## ■ COMMUNITY INVOLVEMENT

Public feedback is an important part of developing transportation projects and infrastructure across Idaho. ITD encourages members of the community to remain engaged with this project as it progresses throughout its project phases.



Frontage Roadway Details

## TIMELINE & NEXT STEPS

### ● SUMMER 2025

#### — DATA COLLECTION

Gather information from existing and new sources to understand what improvements are needed in the project area.

#### — DESIGN CONCEPTS

Develop design alternatives.

#### — ONLINE AND IN-PERSON PUBLIC MEETING

WE ARE HERE

Share project information with the community and gather their input.

#### — UPDATE DESIGN CONCEPTS

Update the design based on community feedback.

### ● WINTER 2025 – 2027

#### — PRELIMINARY DESIGN

Develop recommendations and estimate costs for the project.

#### — PROPERTY ACQUISITION/FINALIZE DESIGN

Work with private property owners to finalize the purchase of Right-of-Way needed to build the project. Complete the design and prepare the project to be bid for construction.

### ● 2031

#### — CONSTRUCTION BEGINS

## FOLLOW THE PROJECT

Anyone interested in updates as this project progresses can scan the QR code or visit [itdprojects.idaho.gov/pages/us95-parks-road](https://itdprojects.idaho.gov/pages/us95-parks-road), and subscribe to our email notification list on the website.



Individuals who need special accommodations should contact [CivilRights@itd.idaho.gov](mailto:CivilRights@itd.idaho.gov) or **208-334-8884**. TTY/TDD users Dial **711** to use the Idaho Relay System. Persons needing an interpreter should contact **208-334-8496**.